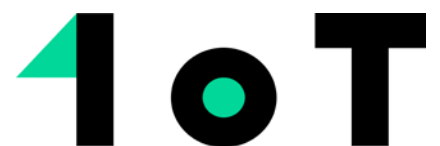
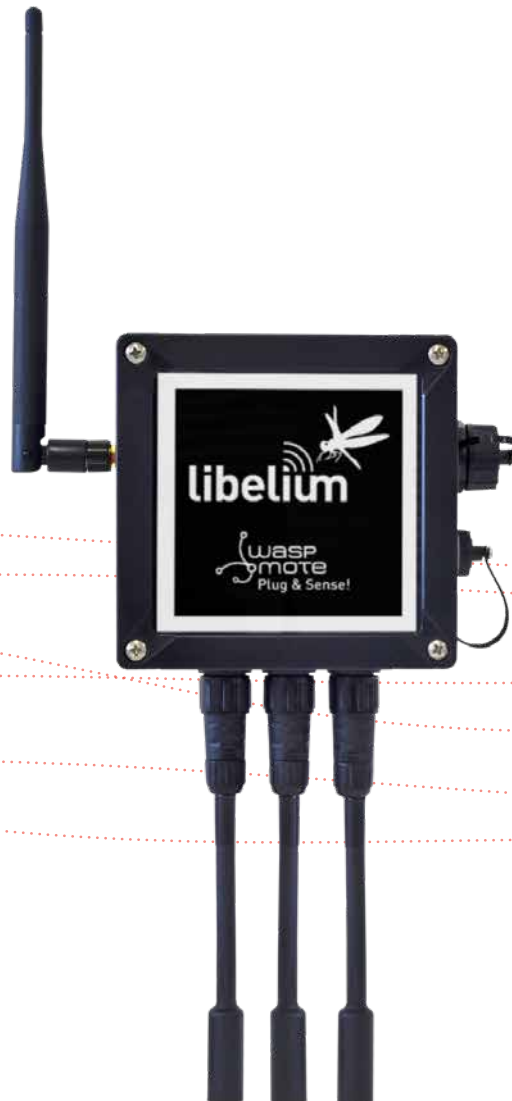


Libelium 1oT Smart Water Solution Kit

Quick Start Guide



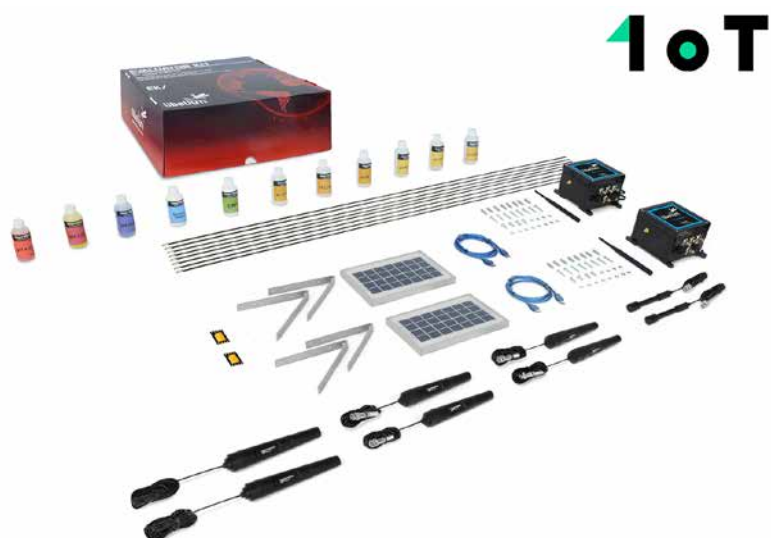
The IoT Marketplace
— Make it real —



INDEX

1. Identify the products.....	3
2. Open the box.....	3
3. Recharge Plug & Sense!.....	4
4. Antennas set up	4
5. Check connection diagram	5
6. Sensors setup.....	5
7. Connect sensors.....	6
8. Connect Solar Panel	6
9. Turn ON Plug & Sense!.....	7
10. Next Steps	7

1. Identify the products



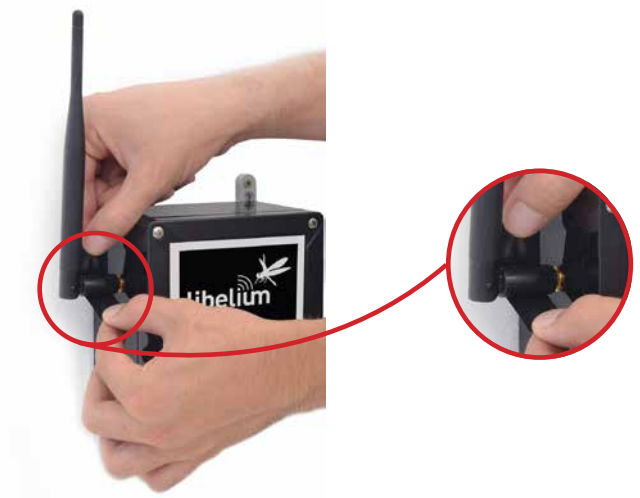
2. Open the box



3. Recharge Plug & Sense!



4. Antennas set up



5. Check connection diagram

Libelium 1oT Smart Water Solution Kit Get started in the IoT!

Plug & Sense!

- (1) Plug & Sense! Smart Water 4G x2

Sensor Probes

- (2) pH Sensor Probe x2
- (3) Dissolved Oxygen Sensor Probe x2
- (4) Conductivity Sensor Probe x2
- (5) Oxidation Reduction Potential Sensor Probe x2
- (6) Oxidation Calibration Kit, K=0.1 x1
- (7) Oxidation Calibration Kit, K=1 x1
- (8) Oxidation Calibration Kit, K=10 x1
- (9) pH Calibration Kit x1
- (10) DO Calibration Solution x1

Power Options

- (11) 6600mAh Rechargeable Battery + External Solar Panel x2

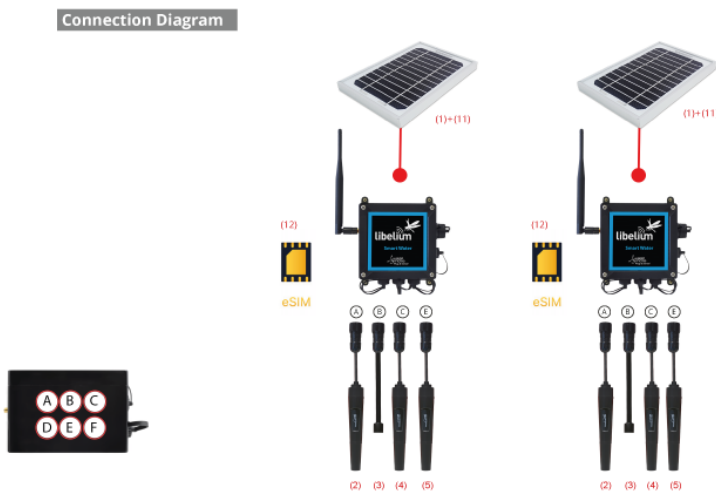
Connectivity

- (12) eSIM card - 1oT x2

Training


- (13) Technical Consultancy 2 hours x1
- (14) Plug&Sense! Programming Service x1

Connection Diagram



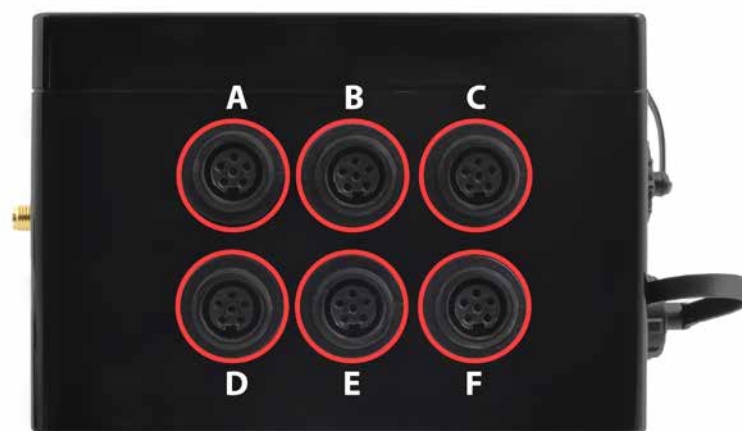
*Pictures are for representation purpose only.

- Show a working demo to your customers within days
- Create an IoT laboratory for your students
- Test and discover the most suitable technology for your project



libelium
www.libelium.com

6. Sensors setup



7. Connect sensors



8. Connect Solar Panel



9. Turn ON Plug & Sense!



10. Next Steps

Register to the Services Cloud Manager in <https://cloud.libelium.com/register> and manage your devices and cloud services from a single point.