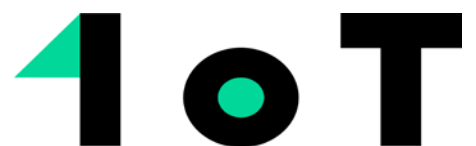
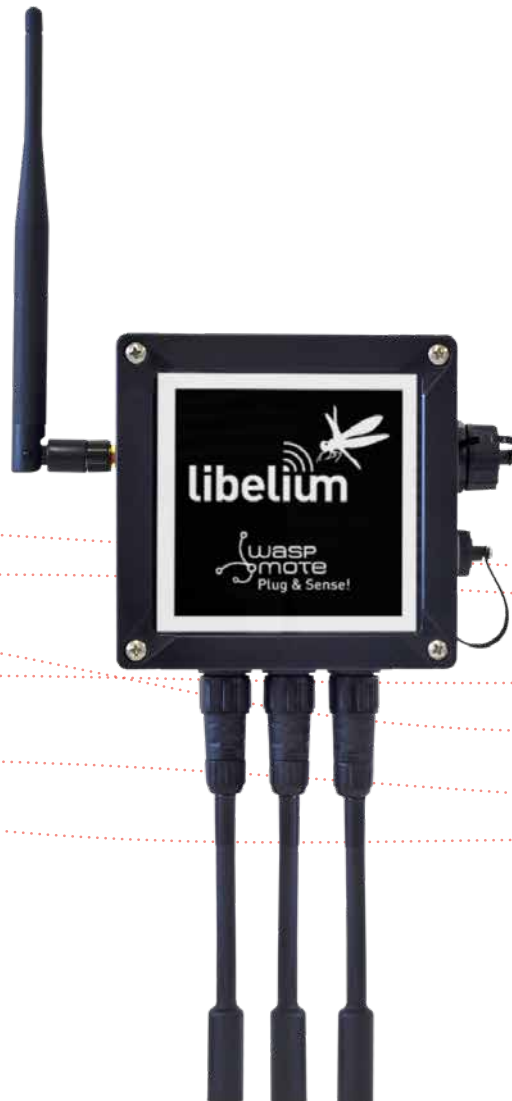


Libelium 1oT Smart Cities Solution Kit

Quick Start Guide



The IoT Marketplace
— Make it real —



INDEX

| | |
|-----------------------------------|---|
| 1. Identify the products..... | 3 |
| 2. Open the box..... | 3 |
| 3. Recharge Plug & Sense!..... | 4 |
| 4. Antennas set up | 4 |
| 5. Check connection diagram | 5 |
| 6. Sensors setup..... | 5 |
| 7. Connect sensors..... | 6 |
| 8. Connect Solar Panel | 6 |
| 9. Turn ON Plug & Sense!..... | 7 |
| 10. Next Steps | 7 |

1. Identify the products



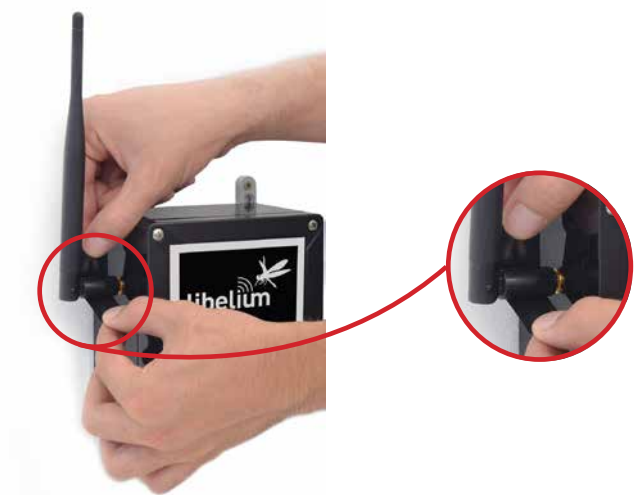
2. Open the box



3. Recharge Plug & Sense!



4. Antennas set up



5. Check connection diagram

Libelium 1oT Smart Cities Solution Kit

Get started in the IoT!

Plug & Sense!

- (1) Plug & Sense! Smart Environment PRO 4G x1

Sensor Probes

- (2) Temperature, Humidity and Pressure Sensor Probe x1
- (3) Calibrated Carbon Monoxide (CO) Gas Sensor Probe x1
- (4) Calibrated Nitric Dioxide (NO₂) Gas Sensor Probe x1
- (5) Calibrated Ozone (O₃) Gas Sensor Probe x1
- (6) Particle Matter (PM1₀/PM2,5 / PM10) - Dust x1

Power Options

- (7) 6600mAh Rechargeable Battery + External Solar Panel x2

Connectivity

- (8) eSIM card - 1oT x1

Training

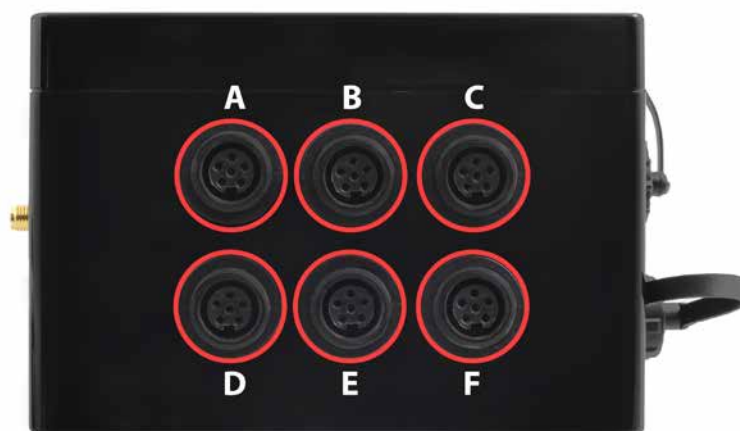
- (9) Technical Support, 2 hours x1
- (10) Plug&Sense! Programming Service x1

- Show a working demo to your customers within days
- Create an IoT laboratory for your students
- Test and discover the most suitable technology for your project

Connection Diagram

*Pictures are for representation purpose only.

6. Sensors setup



7. Connect sensors



8. Connect Solar Panel



9. Turn ON Plug & Sense!



10. Next Steps

Register to the Services Cloud Manager in <https://cloud.libelium.com/register> and manage your devices and cloud services from a single point.